

GSS SEC

FIRST RECYCLED FIBRE SAFETY WEAR



9501 SHORT SLEEVE TEE SHIRT

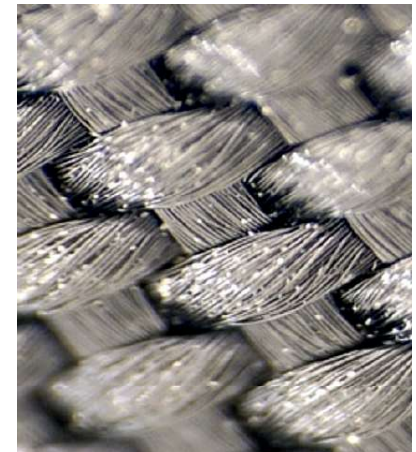
LEADING THE WAY

GSS Safety is now the first safety wear manufacturer and distributor to use 100% recycled fibre in the form of **REPREVE**. **UNIFI**'s high-quality fibres are reconstituted from post-consumer plastic bottles and pre-consumer waste. They are also certified and traceable.

GSS Safety has partnered with **UNIFI** to begin the process of becoming totally eco-friendly, in the design and manufacture of their well-known quality safety apparel lines. **GSS** is proud to release the first step in this action to become **Earth-friendly** with the introduction of their **9501** range of reflective safety tee shirts.

REPREVE®

REPREVE FIBRE CONSTRUCTION



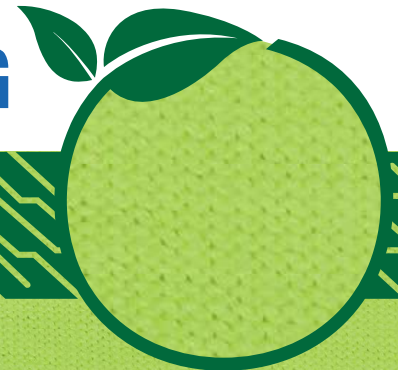
INDUSTRY FIRST

GSS Safety recognises the important need to make a difference in the way the safety apparel industry faces the future of the planet when dealing with the manufacturing of their products. Now, they can truly say that protection is not only afforded to you, our valuable clients, but also the environment that you work and live in.

GSSECO is the first step in modifying our entire line to become sustainable, green and most importantly a valuable product in your quest for a safer work environment. Join us and let's work together for a safer future!



POWER TO PROTECT EVERYTHING



GSS SEC 
POWERED BY **GSS**



WHAT IS REPREVE?

REPREVE is the world's number one brand of recycled performance fiber. Our high-quality fibers are made from 100% recycled materials, including post-consumer plastic bottles and pre-consumer waste. They are also certified and traceable.

We created the **REPREVE** brand to foster a sustainable world by diverting plastic bottles—billions of them—from landfills and oceans. We also collect and reuse industrial waste, starting with our own. Compared to virgin fiber, **REPREVE** helps to offset the use of petroleum, emitting fewer greenhouse gases and conserving water and energy in the process.

THE 9501 REVOLUTION

Our **9501 GSSECO** range is made from a blend of 50% cotton and 50% **REPREVE** fibre, that when combined create the perfect balance for breathable fabric as well as light weight, flexibility and practicality in the work place.

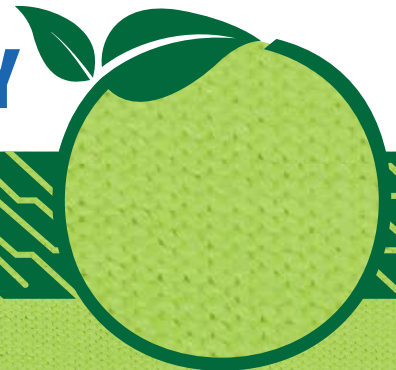
Like many of the **GSS** safety wear range **9501 GSSECO** has been design with you the user in mind. With the safety aspects as a key part of the overall end product to ensure that you are safe, reflective and as visible as possible.

Look toward the future and join us in our mission to make a difference in the sustainability of our planet by taking a look at the opportunities to use **9501 GSSECO** in your work environment and have peace of mind in knowing that you, your staff and now the planet are all protected from the leading provider of safety wear.



9501 LONG SLEEVE TEE SHIRT

GREEN • SAFETY • SUSTAINABILITY



GSS **EC** 
POWERED BY **GSS**